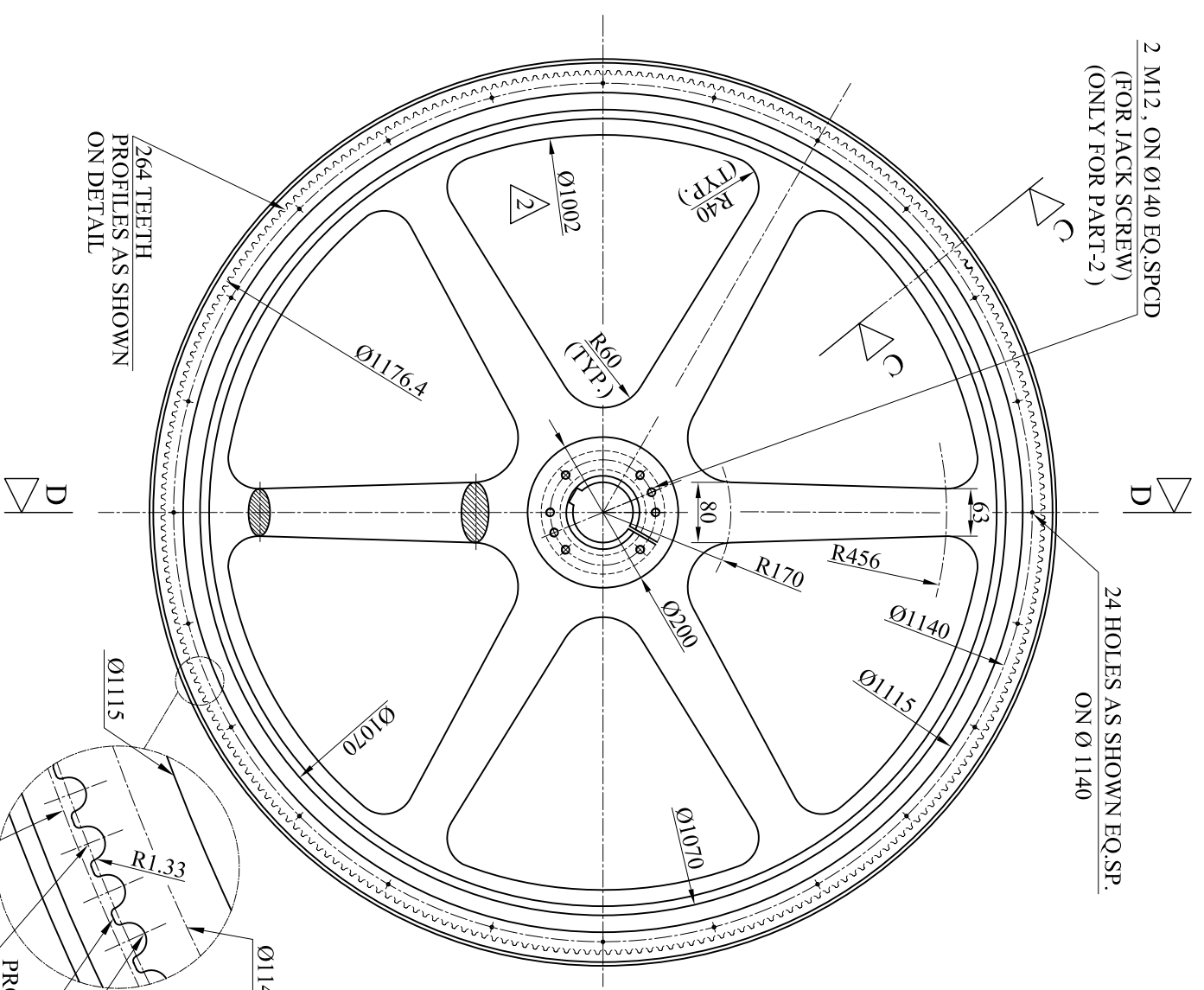


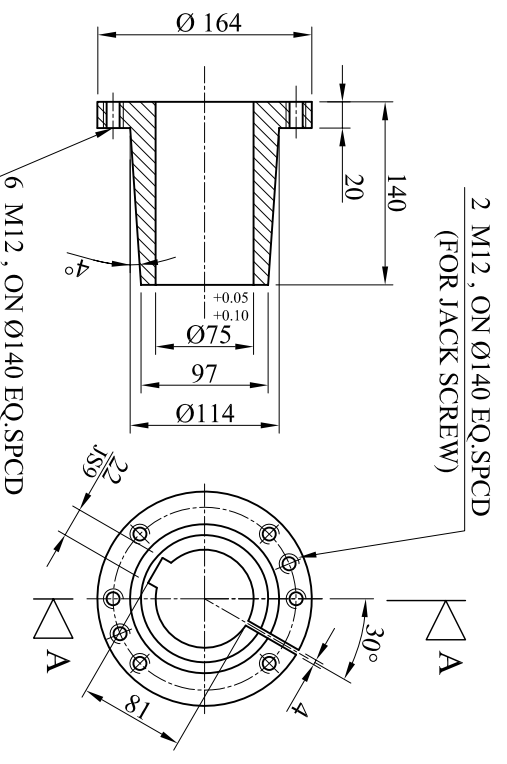
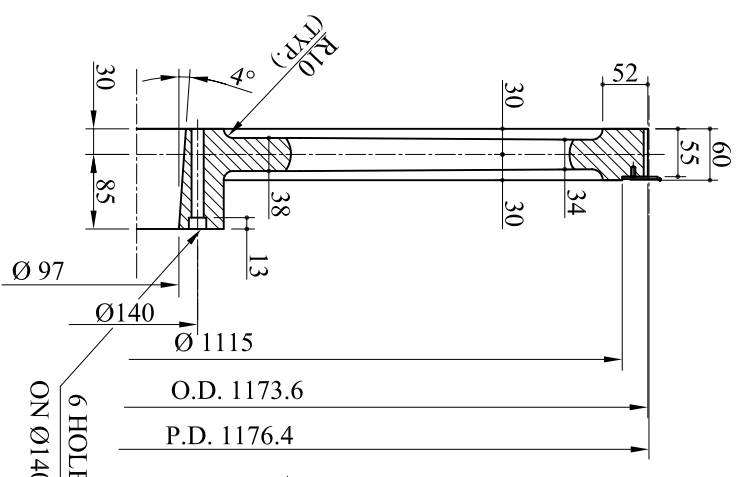
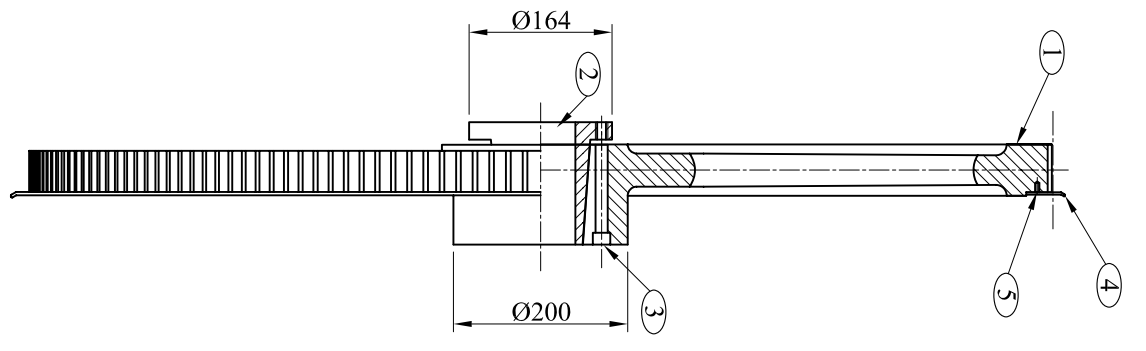
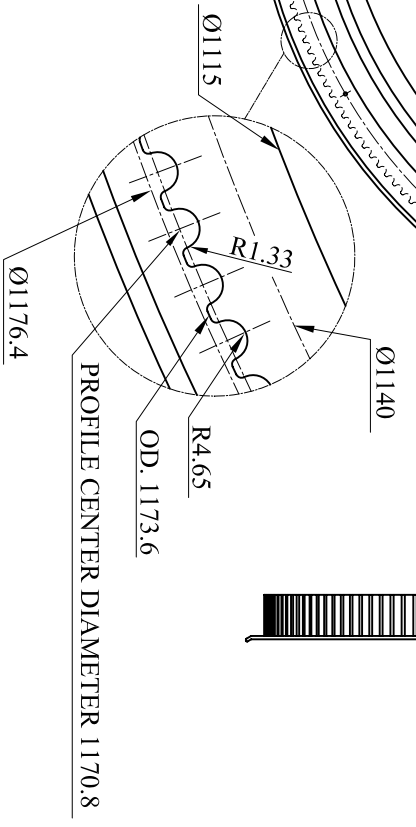
- GENERAL NOTES**
1. TAPER BUSH TO BE CHECKED FOR PROPER FIT TO THE PULLEYS BY THE METHOD OF BLUE FIT.
 2. TAPER BUSH TO BE LIGHTLY OILED AND ASSEMBLED ON PULLEYS.
 3. CASTING FLASHES TO BE GROUND SMOOTH TO THE BASE METAL.
 4. DEBURR ALL SHARP CORNERS AND EDGES.
 5. BELT MODEL : 4578-14MG72-55 OR EQUIVALENT.
 - 6- PULLEYS TO BE DYNAMICALLY BALANCED AFTER MACHINING
 - 7- COATING FOR PULLEY IS PHOSPHATATED.

2 M12, ON Ø140 EQ.SPCD
(FOR JACK SCREW)
(ONLY FOR PART-2)

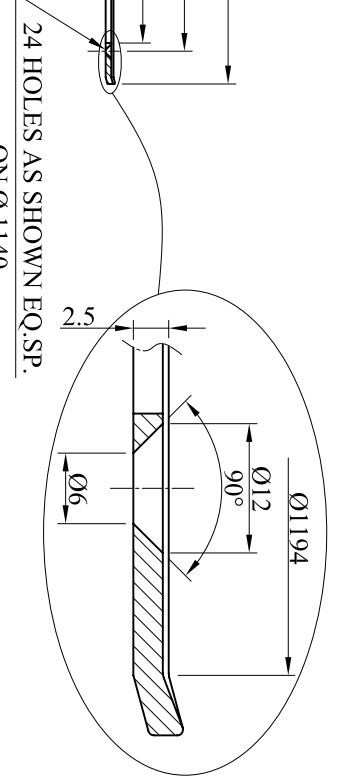
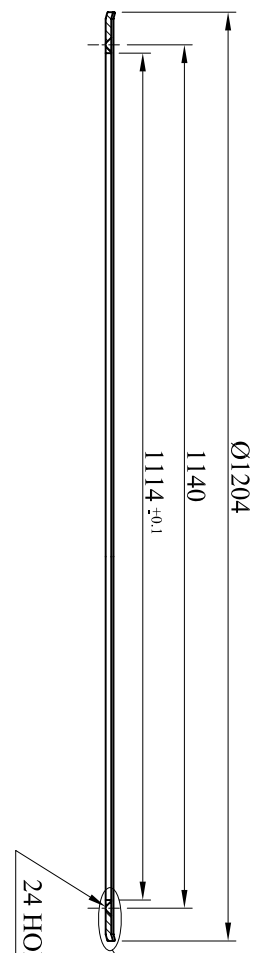
24 HOLES AS SHOWN EQ.SP.
ON Ø 1140



264 TEETH
PROFILES AS SHOWN
ON DETAIL



SECTION A-A



BILL OF MATERIAL FOR SPY-2-(1-4)106-EA-101

NO.	DESCRIPTION	MATERIAL	QTY. / BRNDR.	QTY. / ITEM STATION	WEIGHT / BRNDR. (KGS)	WEIGHT / ITEM (KGS)	WEIGHT / STATION (KGS)
1	LARGE PULLEY	CAST IRON(FC 25)	1	6	24	80	480
2	LARGE PULLEY TAPER BUSH	CR-45	1	6	24	10	60
3	METRIC HEX. SOCKET CAP-SCREW	COMMON	6	36	144	1	6
4	LARGE PULLEY FLANGE	COMMON	1	6	24	6	36
5	HEXAGONAL SOCKET CAP-SCREW (HEAD)	COMMON	24	144	576	1	6
6	BELT	PREMIUM QUALITY	1	6	24	5	30
			TOTAL(KGS)			103	618

HALF SECTION D-D

SECTION C-C

SEALS, STAMPS, and/or APPROVAL SIGNATURES LOCATION

4	07/12/2005	ISSUED FOR FABRICATION	A.M.	MSKH	MSKH
3	27/11/2005	ISSUED FOR FABRICATION	A.M.	MSKH	MSKH
REV.	DATE	DESCRIPTION	BY	CHECKED	APPROVED

OWNER: NATIONAL IRANIAN GAS COMPANY
 شرکت ملی گاز ایران
 NIGC
 PROJECT: IGAT V Gas Compressor Stations
 PURCHASER: OTEC
 CONSULTANT: OTEC

TITLE: ROTATING PART FOR SPY-2-(1-4)106-EA-101 (LARGE PULLEY)

SCALE: ---

SHEET: 3 OF 4

DRAWING NO.: 602-106-TSH-VD-027

VENDOR: TASHA
 DESIGNER: SED
 OTEC

THIS DOCUMENT IS THE PROPERTY OF IRGC. IT IS CONFIDENTIAL AND ALL RIGHTS RESERVED TO THE OWNER. NEITHER THE WHOLE NOR ANY PART OF THIS DOCUMENT MAY BE REPRODUCED OR TRANSMITTED IN ANY FORM FOR ANY MEANS, WITHOUT THE PRIOR WRITTEN CONSENT OF IRGC.