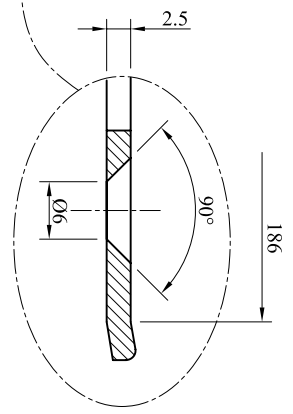
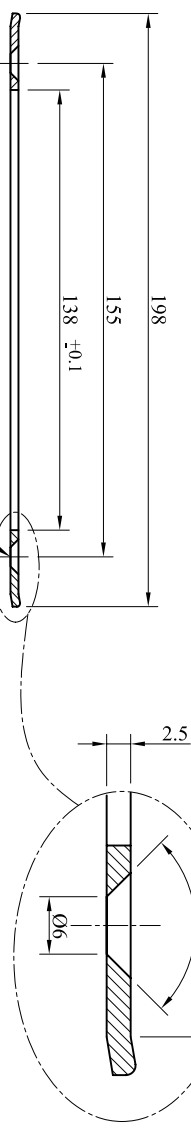
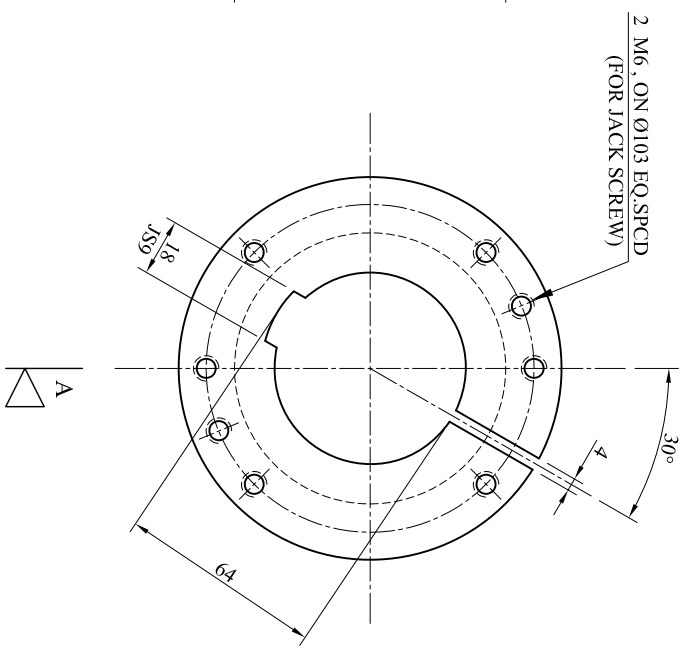
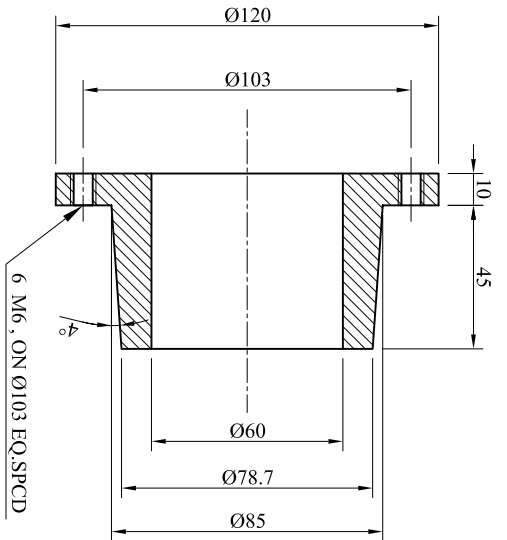
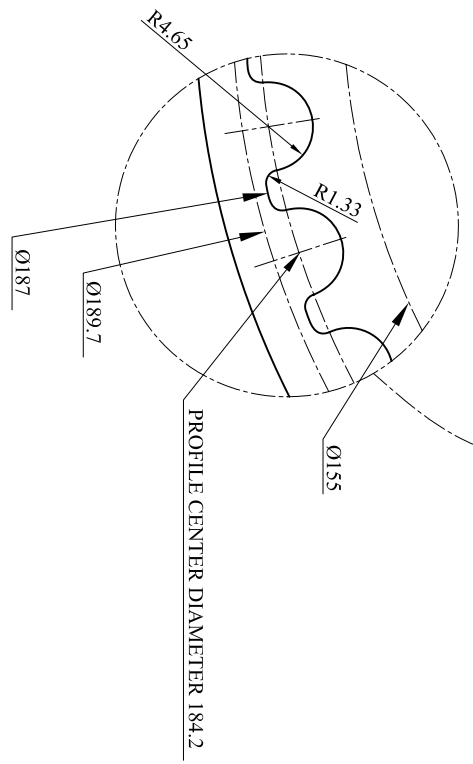
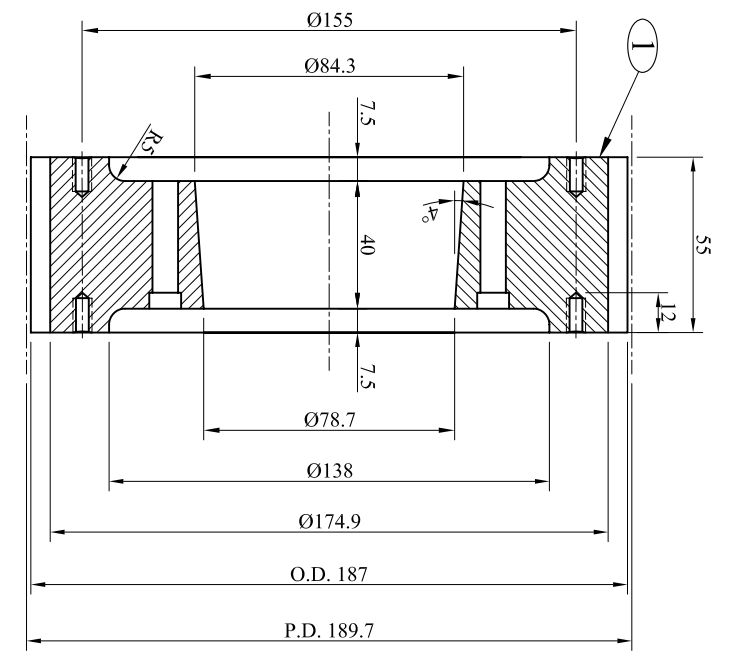
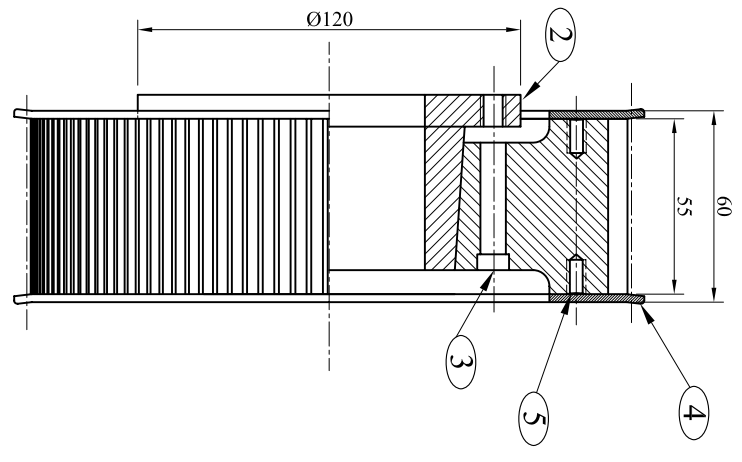
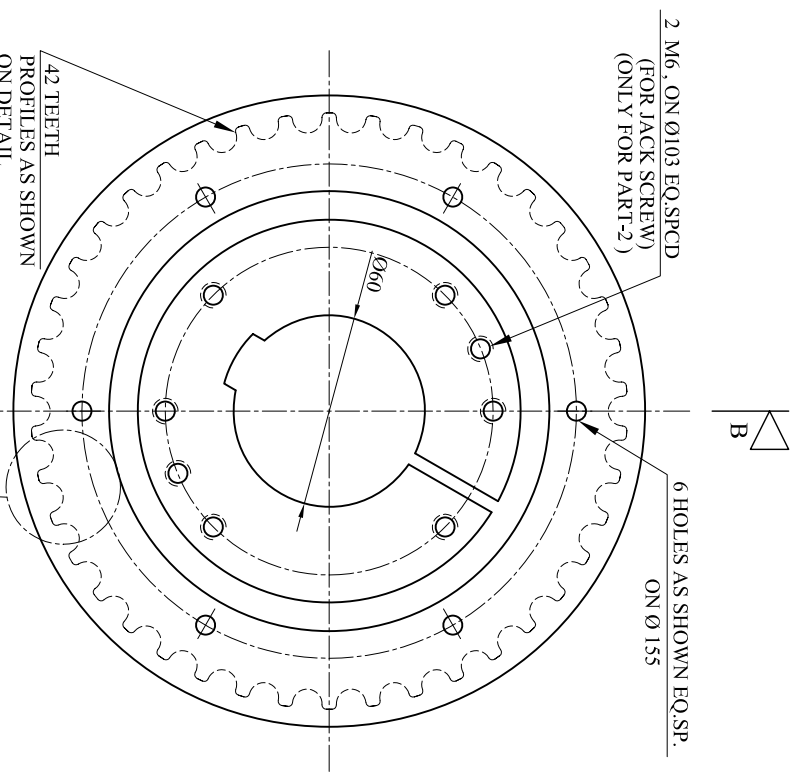


- GENERAL NOTES**
1. TAPER BUSH TO BE CHECKED FOR PROPER FIT TO THE PULLEYS BY THE METHOD OF BLUE FIT.
 2. TAPER BUSH TO BE LIGHTLY OILED AND ASSEMBLED ON PULLEYS.
 3. CASTING FLASHES TO BE GROUND SMOOTH TO THE BASE METAL.
 4. DEBURR ALL SHARP CORNERS AND EDGES.
 5. BELT MODEL : 4578-14MG72-55 OR EQUIVALENT.
 6. PULLEYS TO BE DYNAMICALLY BALANCED AFTER MACHINING
 7. COATING FOR PULLEY IS PHOSPHATATED.

BILL OF MATERIAL FOR SPY-2-(1-4)106-EA-101

NO.	DESCRIPTION	MATERIAL	QTY. / BRNDL	QTY. / ITEM	QTY. / STATION	WEIGHT / BRNDL (KG)	WEIGHT / ITEM (KG)	WEIGHT / STATION (KG)
1	SMALL PULLEY	CAST IRON(GG 25)	1	6	24	10	60	240
2	SMALL PULLEY TAPER BUSH	CK45	1	6	24	3	18	72
3	METRIC CAP SCREW	COMMON	6	36	144	1	6	24
4	SMALL PULLEY HEXAGONAL SOCKET SCREW	COMMON	2	12	48	0.3	2	7
5	HEXAGONAL SOCKET SCREW	COMMON	12	72	288	1	6	24
TOTAL(KG)						15	92	367



SEALS, STAMPS, and/or APPROVAL SIGNATURES LOCATION

1	07/12/2005	ISSUED FOR FABRICATION	A.M.	MSH	MSH
2	27/11/2005	ISSUED FOR FABRICATION	A.M.	MSH	MSH

OWNER: NATIONAL IRANIAN GAS COMPANY
 شرکت ملی گاز ایران

PROJECT: IGAT V Gas Compressor Stations
 مشاور: OTEC

PURCHASER: OTC

TITLE: ROTATING PART FOR SPY-2-(1-4)106-EA-101 (SMALL PULLEY)

VENDOR: TASHA
 DESIGNER: SED

SCALE: ---
 SHEET: 4 OF 4
 DRAWING NO.: 602-106-TSH-VD-027