

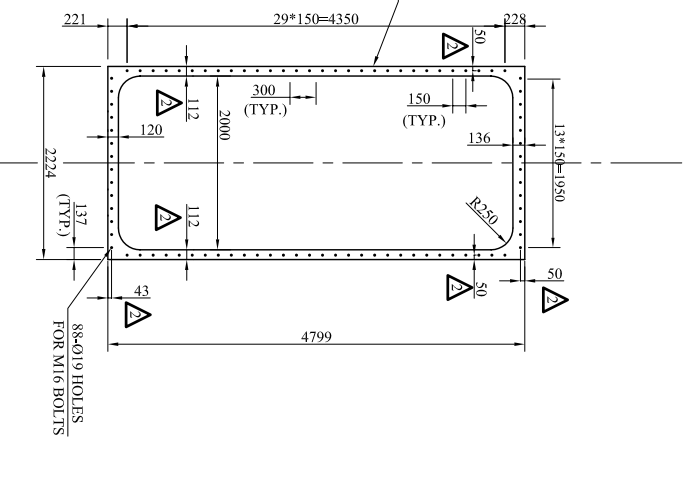
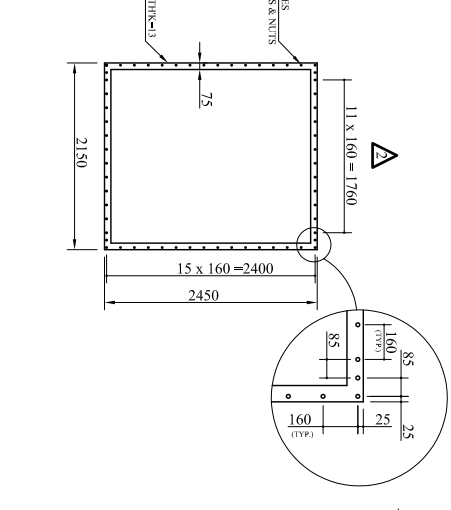
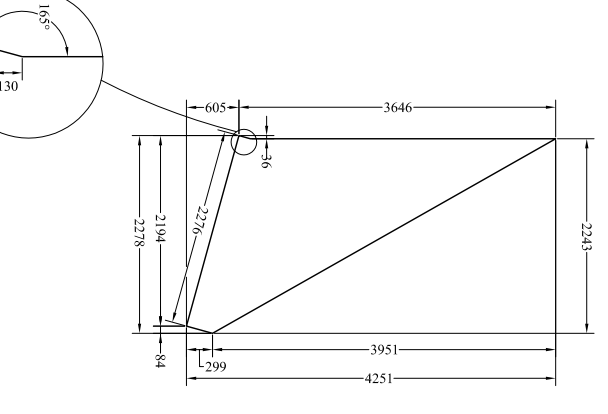
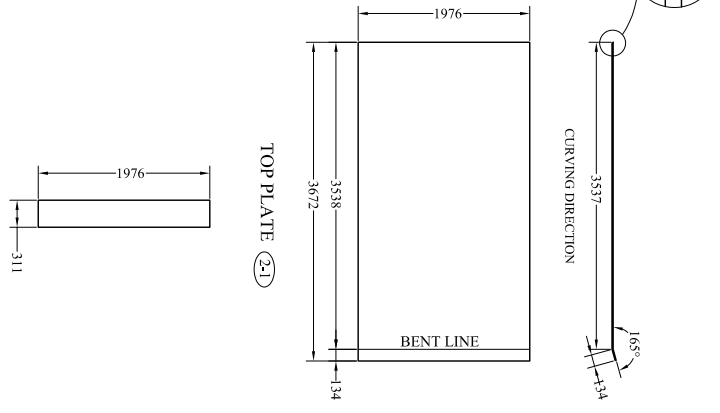
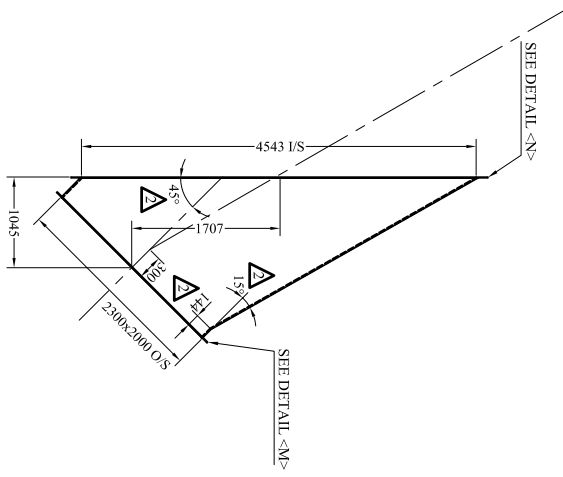
DUCT FOR <N2>

BOTTOM PLATE

SIDE PLATES

DETAIL <K>

DETAIL <H>



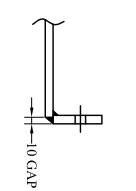
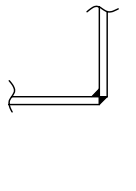
DUCT FOR <N1>

BOTTOM PLATE

SIDE PLATES

DETAIL <M>

DETAIL <N1>



DETAIL OF DUCT WELDING

DETAIL AT FLANGE

ITEM	DESCRIPTION	MAT.	QTY.	WEIGHT(KG)
1-1	TOP PLATE FOR DUCT (N2)	SA-516 Gr.60	1	690
1-2	BOTTOM PLATE FOR DUCT (N2)	SA-516 Gr.60	2	1077
1-3	SIDE PLATES FOR DUCT (N2)	SA-516 Gr.60	1	70
1-4	FLANGE DETAIL <K>	SA-516 Gr.60	1	150
1-5	FLANGE DETAIL <H>	SA-516 Gr.60	1	12
1-6	NUIT	M16 L=55	158	5
1-7	TOP PLATE FOR DUCT (N1)	SA-516 Gr.60	1	745
1-8	BOTTOM PLATE FOR DUCT (N1)	SA-516 Gr.60	2	920
1-9	SIDE PLATES FOR DUCT (N1)	SA-516 Gr.60	1	70
1-10	FLANGE DETAIL <M>	SA-516 Gr.60	1	160
1-11	FLANGE DETAIL <N>	SA-516 Gr.60	1	12
1-12	NUIT	M16 L=50	156	5
1-13	GASKET FOR DETAIL <I-1>	NON ASBESTOS & RUBBER	2	---
1-14	GASKET FOR DETAIL <I-2>	NON ASBESTOS & RUBBER	2	---
1-15	GASKET FOR DETAIL <I-3>	NON ASBESTOS & RUBBER	2	---
1-16	GASKET FOR DETAIL <I-4>	NON ASBESTOS & RUBBER	2	---
1-17	GASKET FOR DETAIL <I-5>	NON ASBESTOS & RUBBER	2	---
1-18	GASKET FOR DETAIL <I-6>	NON ASBESTOS & RUBBER	2	---
1-19	TOTAL			4019

**OWNER:** КИРПИЧ  
**PROJECT:** AMMONIA & UREA COMPLEX IN KIRPICH  
**CONTRACTOR:** KAWASAKI  
**DESIGNER:** DESIG. CHK. APP. BY  
**SCALE:** 1:40  
**SHEET:** 1 of 1  
**PROJECT NO.:** 5777

THIS DOCUMENT IS THE PROPERTY OF PRIMO. IT IS CONFIDENTIAL AND ALL RIGHTS RESERVED TO THE OWNER AND/OR SUPPLIER, WHETHER THE WHOLE OR PART OF THE DOCUMENT BE RELEASED TO ANY THIRD PARTY. REPRODUCTION, STORAGE IN RETRIEVAL SYSTEM OR TRANSMISSION IN ANY FORM FOR ANY PURPOSE, WITHOUT THE PRIOR WRITTEN CONSENT OF PRIMO AND/OR SUPPLIER, IS STRICTLY PROHIBITED.