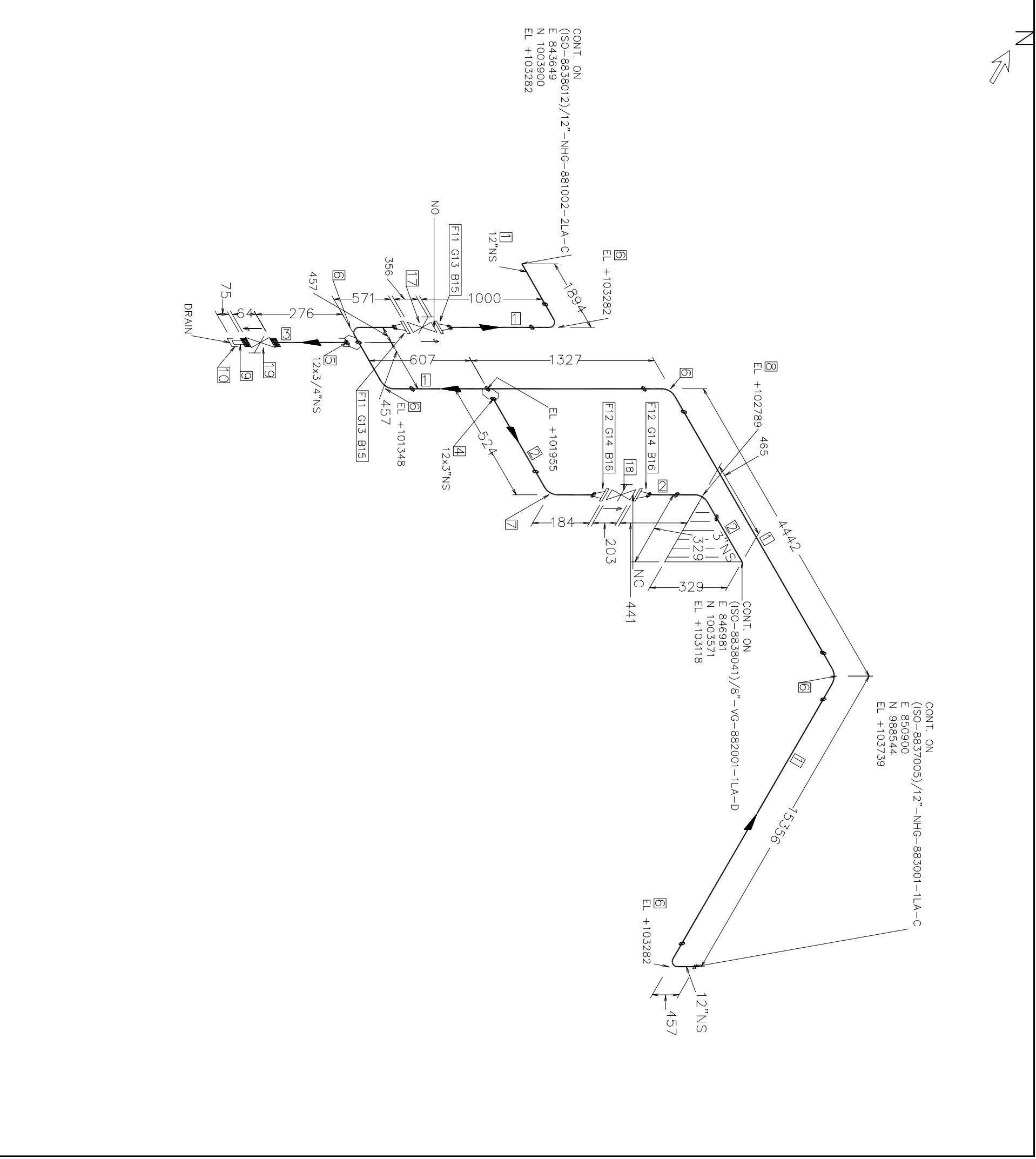


FABRICATION MATERIALS				
PT NO	COMPONENT DESCRIPTION	N.S. (NNS)	ITEM CODE	QTY
PIPE				
1	PIPE SMLS S20 BE ASTM A333 GR.6	12	10282QB	20.9M
2	PIPE SMLS STD BE ASTM A333 GR.6	3	10282QL	1.0M
3	PIPE SMLS XS PE ASTM A333 GR.6	3/4	10283QM	0.1M
FITTINGS				
4	WELDOLET STD BE ASTM A350 GR.LF2	12 x 3	44232QL	1
5	SOCKET 3000# SW ASTM A350 GR.LF2	12 x 3/4	452341F	1
6	90 ELBOW S20 BE ASTM A420 GR.WPL6-S	12	302423B	6
7	90 ELBOW STD BE ASTM A420 GR.WPL6-S	3	302423L	1
8	45 ELBOW STD BE ASTM A420 GR.WPL6-S	3	312423L	1
9	PIPE SMLS XS TOE/POE (75MM) ASTM A333 GR.6	3/4	10283QM.	1
10	CAP 3000# SC. ASTM A350 GR.LF2	3/4	472381F	1
FLANGES				
11	FLANGE WELD NECK 150# S20 RF SERRATED	12	200801B	2
12	FLANGE WELD NECK 150# STD RF SERRATED	3	200801L	2
ERECTOR MATERIALS				
COMPONENT DESCRIPTION				
N.S. (NNS)				
ITEM CODE				
QTY				
GASKETS				
13	GASKET SPIRAL WOUND 150# 4.5mm RF SS304+H2		9963214D	2
14	GRAFOIL FILLER SS304 OUTER RING		9963214D	2
BOLTS				
15	4.3/4 ASTM A320 GR.L7 + 2 NUTS ASTM A1947/8 GR.4	24		
16	3.1/2 ASTM A320 GR.L7 + 2 NUTS ASTM A1945/8 GR.4	8		
VALVES / IN-LINE ITEMS				
17	GATE VALVE 150# RF BODY-ASTM A352 GR.LCB,TRIM-316+HF,BB,OS&Y,B16.10	12	602341Q	1
18	GATE VALVE 150# RF BODY-ASTM A352 GR.LCB,TRIM-316+HF,BB,OS&Y,B16.10	3	602341Q	1
19	GATE VALVE 800# SW BODY-ASTM A350 GR.LF2,TRIM-316+HF,BB,OS&Y,MANUF. STD	3/4	602205Q	1



		<b>پتروشیمی توسعه صنایع پتروشیمی</b> <b>پتروشیمی</b>		<b>PETROCHEMICAL INDUSTRIES DEVELOPMENT MANAGEMENT COMPANY (PIDMCO)</b>				
REF. PLAN DRAWING(S)		DES. PRESS.		INSULATION				
88-PI-3801-A0		3.5 barg.		TYPE THK.				
REF. P&I DIAGRAM(S)		TEMPERATURE		C 60				
88-PR-103-A1		OP. -33 °C		PIDMCO PROJ. NO.				
		DES. 87/-40 °C		LINE NUMBER :				
				12"-NHG-883001-1LA-C				
				SEC PROJ. NO.				
				ISOMETRIC NUMBER:				
				ISO-8838013				
				SHT. 1 OF 1				
REV NO.	DATE	DESCRIPTION		BY	CHKD	MTRL	STRS	APPD
0	01.04.05	ISSUED FOR ENGINEERING		A.H	A.A	N.A	B.KH	L.KH