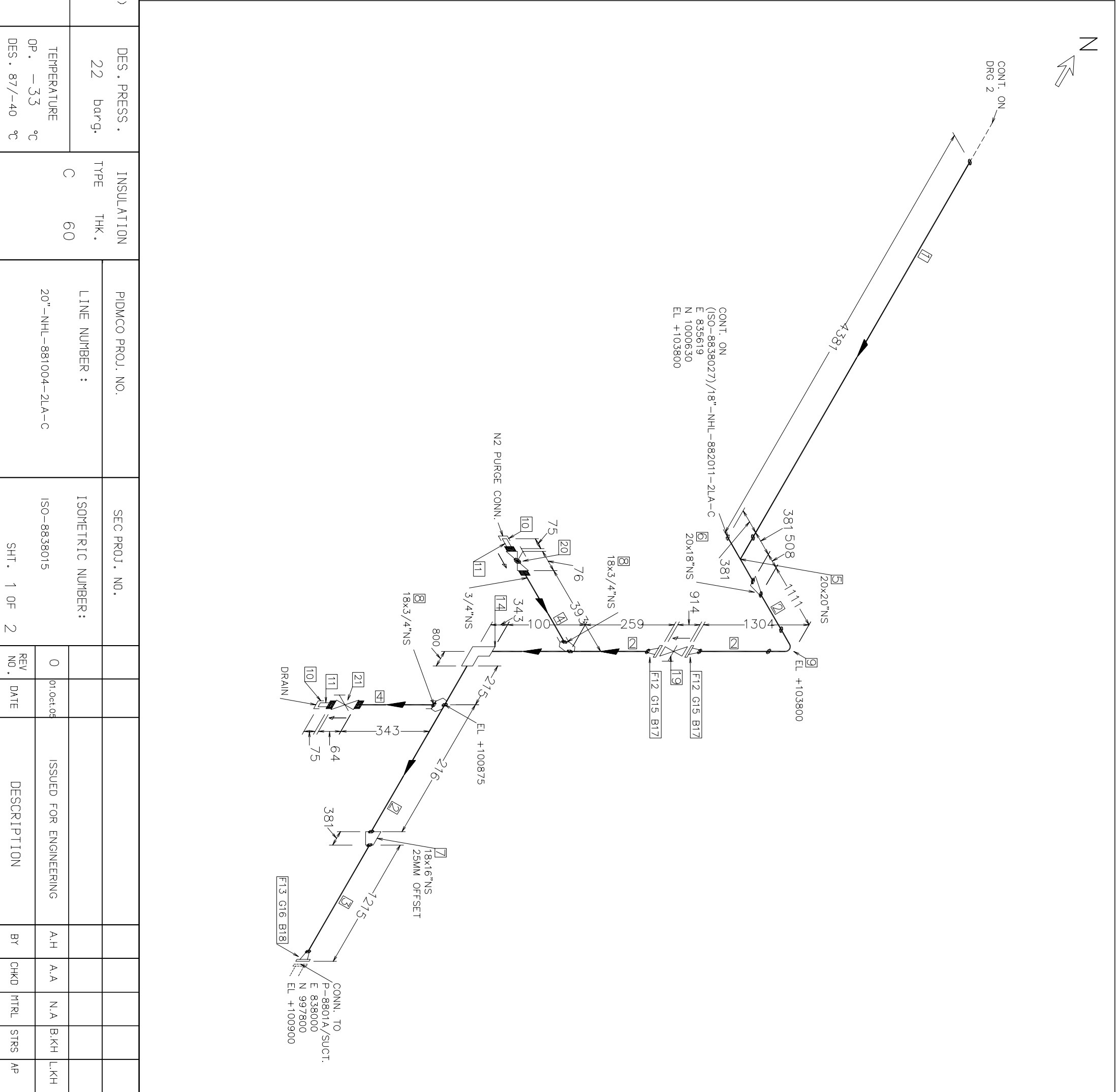


FABRICATION MATERIALS			
PT NO	COMPONENT DESCRIPTION	N.S. (NNS)	ITEM CODE QTY
PIPE			
1	PIPE SMLS S40 BE ASTM A333 GR.6	20	102820D 4.0M
2	PIPE SMLS S40 BE ASTM A333 GR.6	18	102820D 1.6M
3	PIPE SMLS S40 BE ASTM A333 GR.6	16	102820D 1.1M
4	PIPE SMLS XS PE ASTM A333 GR.6	3/4	102830M 0.3M
FITTINGS			
5	TEE S40 BE ASTM A420 GR.WPL6-S	20 x 20	382420D 1
6	CON. REDUCER S40 BE ASTM A420 GR.WPL6-S	20 x 18	53242DD 1
7	ECC. REDUCER S40 BE ASTM A420 GR.WPL6-S	18 x 16	54242DD 1
8	SOCKET 3000# SW ASTM A350 GR.LF2	18 x 3/4	452341F 2
9	90 ELBOW S40 BE ASTM A420 GR.WPL6-S	18	302423D 1
10	CAP 3000# SC. ASTM A350 GR.LF2	3/4	472381F 2
11	PIPE SMLS XS TOE/POE (75MM) ASTM A333 GR.6	3/4	102830M. 2
FLANGES			
12	FLANGE WELD NECK 300# S40 RF SMOOTH	18	200812D 2
	FINISH ASTM A350 GR.LF2		
13	FLANGE WELD NECK 300# S40 RF SMOOTH	16	200812D 1
	FINISH ASTM A350 GR.LF2		
VALVES / IN-LINE ITEMS			
14	STRAINER 300# S40 BW T-TYPE (TYPE B).BODY-ASTM A420 GR.WPL6-S.SCREEN-SS304	18	8609221DC 1
ERECTION MATERIALS			
COMPONENT DESCRIPTION			
N.S. (NNS)			
ITEM CODE QTY			
GASKETS			
15	GASKET SPIRAL WOUND 300#4.5mm RF SS304#8		9963224D 2
	GRAFOIL FILLER SS304 OUTER RING		
16	GASKET SPIRAL WOUND 300#4.5mm RF SS304#6		9963224D 1
	GRAFOIL FILLER SS304 OUTER RING		
BOLTS			
17	7.3/4 ASTM A320 GR.L7 + 2 NUTS ASTM A1941.1/4 GR.4		48
18	7.1/2 ASTM A320 GR.L7 + 2 NUTS ASTM A1941.1/4 GR.4		20
VALVES / IN-LINE ITEMS			
19	GATE VALVE 300# RF BODY-ASTM A352	18	6023320G 1
	GR.LCB,TRIM-316+HF,BB.OS&Y,GEAR,B16.10		
20	GLOBE VALVE 800# SW BODY-ASTM A350	3/4	612205Q 1
	GR.LF2,TRIM-316+HF,BB.OS&Y,MANUF,STD		
21	GATE VALVE 800# SW BODY-ASTM A350	3/4	602205Q 1
	GR.LF2,TRIM-316+HF,BB.OS&Y,MANUF,STD		



		REF. PLAN DRAWING(S) 88-PI-3801-A0	DES. PRESS. 22 barg.	INSULATION TYPE THK. C 60	PIDMCO PROJ. NO. LINE NUMBER : 20"-NHL-881004-2LA-C	SEC PROJ. NO. ISOMETRIC NUMBER : ISO-8838015	SHIT. 1 OF 2	REV NO. 0	DATE 01.oct.05	DESCRIPTION ISSUED FOR ENGINEERING	BY A.H	CHKD A.A	MTRL N.A	STRS B.KH	AP L.KH
		REF. P&I DIAGRAM(S) 88-PR-101-A1	TEMPERATURE OP. -33 °C DES. 87/-40 °C												