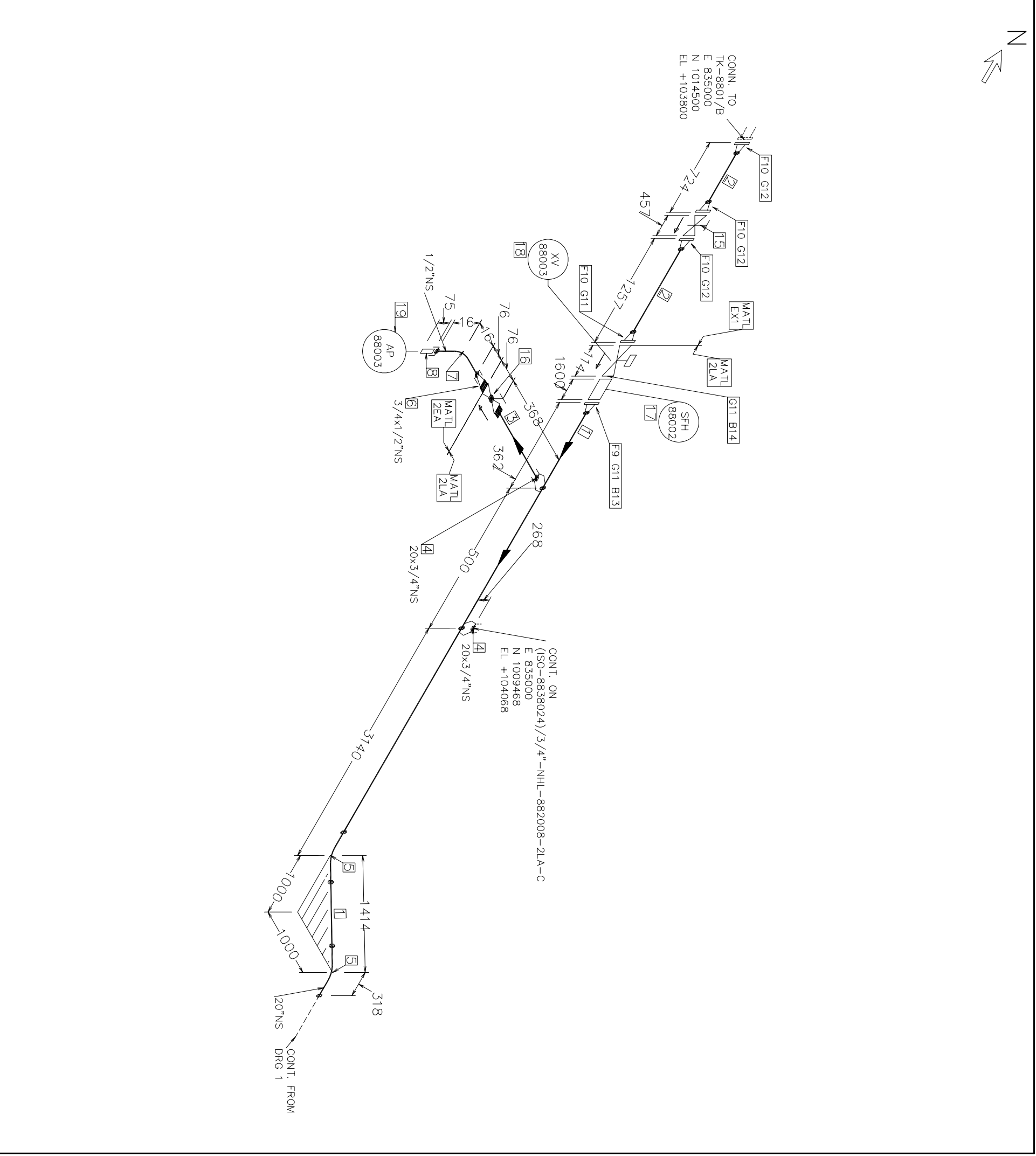


PT NO	COMPONENT DESCRIPTION	N.S. (INS)	ITEM CODE	QTY
FABRICATION MATERIALS				
PIPE				
1	PIPE SMLS S40 BE ASTM A333 GR.6	20	102820D	4.4M
2	ANSI B36.10 PE SMLS PIPE ASTM A53 GR.B	20	EXIST	1.4M
3	PIPE SMLS XS PE ASTM A333 GR.6	3/4	102830M	0.1M
FITTINGS				
4	SOCKET 3000# SW ASTM A350 GR.LF2	20 x 3/4	452341F	2
5	45 ELBOW S40 BE ASTM A420 GR.WPL6-S	20	312423D	2
6	CON. SWAGE 40S PE ASTM A403 GR.WP304L-S 3/4 x 1/2	1/2	556330V	1
7	90 ELBOW 3000# SW ASTM A182 GR.F304L	1/2	306241W	1
8	PIPE SMLS 40S TOE/POE (75MM) ASTM A312 GR.TP304L	1/2	105330V.	1
FLANGES				
9	FLANGE WELD NECK 300# S40 RF SMOOTH	20	200812D	1
10	FINISH ASTM A350 GR.LF2			
	FLANGE WELD NECK 300# S20 RF SERRATED	20	EXIST	4
	FINISH ASTM A105			
ERECTION MATERIALS				
COMPONENT DESCRIPTION				
		N.S. (INS)	ITEM CODE	QTY
GASKETS				
11	GASKET SPIRAL WOUND 300# 4.5mm RF SS304+20		9963224D	3
12	GRAFOL FILLER SS304 OUTER RING		EXIST	3
13	GASKET SPIRAL WOUND 300# 4.5MM RF.SS304+GRAFOL FILLER.WITH C.S. OUTER RING			
BOLTS				
14	8 ASTM A320 GR.L7 + 2 NUTS ASTM A194 GR.4	1.1/4		24
15	8 ASTM A193 GR.B7	1.1/4		24
VALVES / IN-LINE ITEMS				
16	VALVE GATE 150# RF BODY-ASTM A216 GR.WCB20 TRIM-F6&HF,GEAR OPERATE	3/4	BY VENDOR	1
17	GLOBE VALVE 800# SW BODY-ASTM A350 GR.LF2,TRIM-316+HF,BB.OS&Y,MANUF.STD	3/4	612205Q	1
INSTRUMENTS				
18	FLOW INSTRUMENT 300# RF SFH 88002	20		1
19	XV VALVE #300,RF XV 88003	20		1
	INSTRUMENT CONNECTION SCRD AP 88003	1/2		1



		REF. PLAN DRAWING(S) 88-PI-3801-A0	DES. PRESS. 22 barg.	INSULATION TYPE THK. C 60	PIDMCO PROJ. NO. LINE NUMBER : 20"-NHL-881004-2LA-C	SEC PROJ. NO. ISOMETRIC NUMBER : ISO-8838015	REV NO. 0	DATE 01.04.05	DESCRIPTION ISSUED FOR ENGINEERING	BY A.H	CHKD A.A	MTRL N.A	STRS B.KH	APPD L.KH
PETROCHEMICAL INDUSTRIES DEVELOPMENT MANAGEMENT COMPANY (PIDMCO) شرکت مدیریت توسعه صنایع پتروشیمی		REF. P&I DIAGRAM(S) 88-PR-101-A1	TEMPERATURE OP. -33 °C DES. 87/-40 °C	20"-NHL-881004-2LA-C	SHT. 2 OF 2	REV NO. 0	DATE 01.04.05	DESCRIPTION ISSUED FOR ENGINEERING	BY A.H	CHKD A.A	MTRL N.A	STRS B.KH	APPD L.KH	