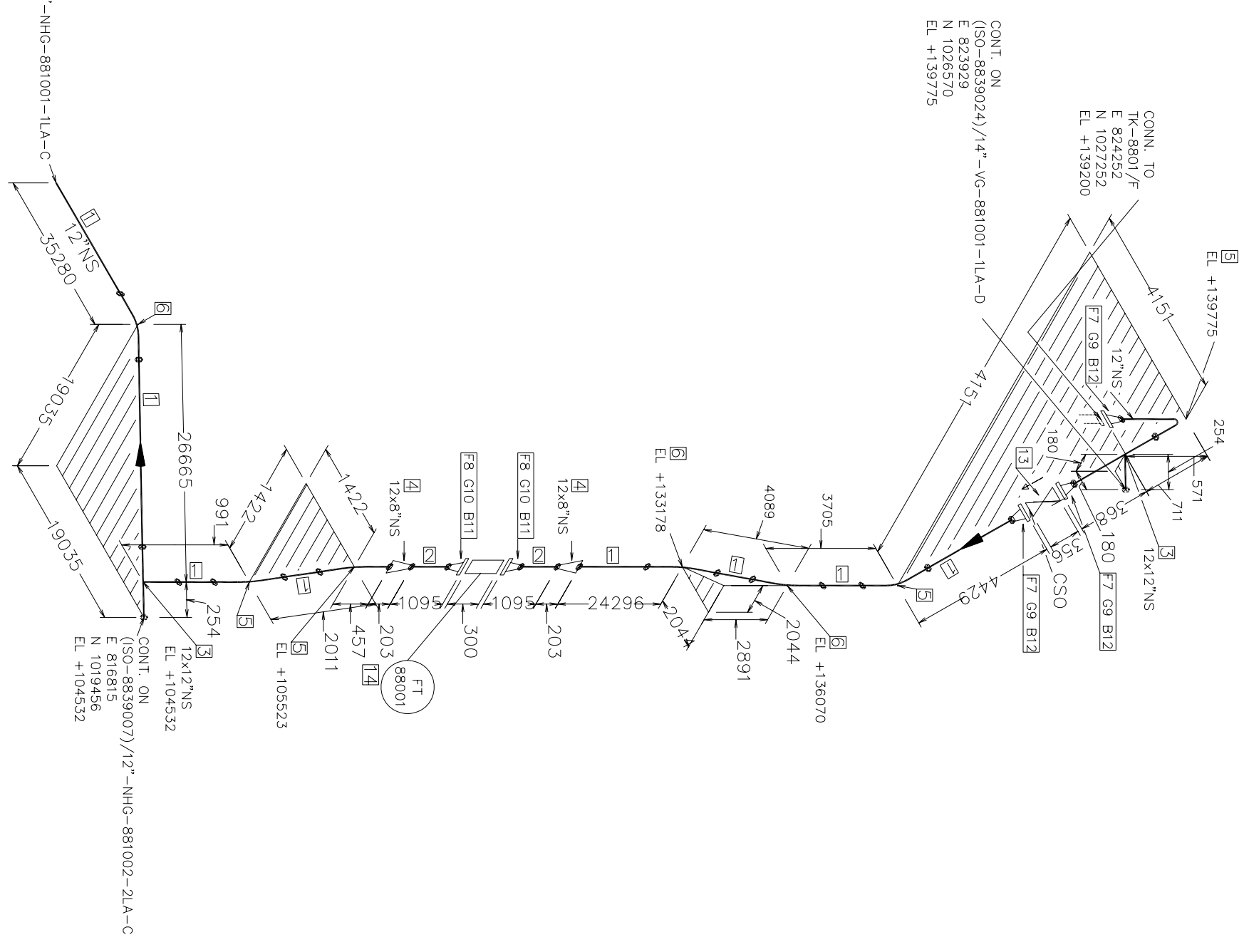


FABRICATION MATERIALS

PT NO	COMPONENT DESCRIPTION	N.S. (INS)	ITEM CODE	QTY
1	PIPE PIPE SMLS S20 BE ASTM A333 GR.6	12	10282QB	97.5M
2	PIPE SMLS S20 BE ASTM A333 GR.6	8	10282QB	2.0M
3	FITTINGS TEE S20 BE ASTM A420 GR.WPL6-S	12 x 12	38242QB	2
4	CON. REDUCER S20 BE ASTM A420 GR.WPL6-S	12 x 8	53242BB	2
5	90 ELBOW S20 BE ASTM A420 GR.WPL6-S	12	302423B	4
6	45 ELBOW S20 BE ASTM A420 GR.WPL6-S	12	312423B	3
7	FLANGES FLANGE WELD NECK 150# S20 RF SERRATED	12	200801B	3
8	FINISH ASTM A350 GR.LF2 FLANGE WELD NECK 300# S20 RF SMOOTH FINISH ASTM A350 GR.LF2	8	200812B	2
ERECTOR MATERIALS				
COMPONENT DESCRIPTION				
N.S. (INS)				
ITEM CODE				
QTY				
GASKETS				
9	GASKET SPIRAL WOUND 150# 4.5mm RF SS304+H2		9963214D	3
10	GRAFOIL FILLER SS304 OUTER RING GASKET SPIRAL WOUND 300# 4.5mm RF SS304+H GRAFOIL FILLER SS304 OUTER RING		9963224D	2
BOLTS				
11	5.1/2 ASTM A320 GR.L7 + 2 NUTS ASTM A1947/8 GR.4			24
12	4.3/4 ASTM A320 GR.L7 + 2 NUTS ASTM A1947/8 GR.4			36
VALVES / IN-LINE ITEMS				
13	GATE VALVE 150# RF BODY-ASTM A352 GR.LCB,TRIM-316+HF,JB,OS&Y,B16.10	12	602341Q	1
INSTRUMENTS				
14	FLOW INSTRUMENT 300# RF FT 88001	8		1

<p>PETROCHEMICAL INDUSTRIES DEVELOPMENT MANAGEMENT COMPANY (PIDMCO) شرکت مدیریت توسعه صنایع پتروشیمی</p>	REF. PLAN DRAWING(S) 88-PI-3901-A0	DES. PRESS. 3.5 barg.	INSULATION TYPE THK. C 60	PIDMCO PROJ. NO. LINE NUMBER : 12"-NHG-881001-1LA-C	SEC PROJ. NO. ISOMETRIC NUMBER: ISO-8839006	REV NO. DATE 16.oct.05	DESCRIPTION ISSUED FOR ENGINEERING	BY A.H	CHKD A.A	MTRL N.A	STRS B.KH	APPD L.KH
<p>Sabz Engineering Company شرکت مهندسی سبز</p>	REF. P&I DIAGRAM(S) 88-PR-101-A1	TEMPERATURE OP. -33 °C DES. 87/-40 °C										

CONT. ON
(ISO-0044018)12"-NHG-881001-1LA-C
E 762500
N 1038490
EL +104532



0	16.oct.05	ISSUED FOR ENGINEERING	A.H	A.A	N.A	B.KH	L.KH
---	-----------	------------------------	-----	-----	-----	------	------